

# Where can SCALE take you?



20

Provider group  
engagements  
since inception

1,410

Providers across  
our client partners

+100

Healthcare c-suite  
roles held by our team

41

Healthcare companies  
founded by our team

## We solve for the difficult to find expertise, resources, and commitment needed to reach your practice management goals.

We are a team of healthcare professionals who pair unrivaled business management expertise with comprehensive clinical specialty knowledge. We transform challenge into opportunity and help your business thrive.

## Comprehensive and multidisciplinary services

We serve as an extension of your administrative and management teams. Together, we can improve the efficiency and performance of your Physician Group by implementing best-practice and empowering leadership. A sampling of our full suite of offerings include:

### ■ SCALE Operational Disciplines

- RCM
- Payor Contracting
- IT/Data
- MSO Formation
- Marketing
- Market Research
- Crisis Management

### ■ SCALE Senior Management Expertise

- Executive Recruitment
- Physician Recruitment
- Board/Management Training
- Acquisition Integration
- Corporate Development
- Analytics/Benchmarking
- Cost Savings

# SCALE

/skāl/ • noun

A graduated series of steps or order.

*Our singular focus is to help physicians achieve success with a systematic approach.*



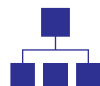
■ Dark green areas indicate SCALE's presence

“

SCALE has been able to quickly understand our needs and goals, as well as implement practical solutions to help bring our growth and operational visions closer to reality.

**Client Partner**

Independent Physical  
Therapy Group



**Team/Organization  
Structure Augmentation**



**Cost Savings**



**Growth & Development**



**Management Performance  
Clarity & Communications  
Organization**



**On-Going Operations  
& Execution Performance**

## Seasoned and diverse team of experts

Our team spans the United States and Europe and brings an average of 25 years' worth of healthcare industry knowledge and business expertise to our client engagements. We have seen it all and been through it all. Whatever challenges you're facing, we have the experts who can help.

## Physician advocates and true partners

We roll up our sleeves and get in the trenches with you, which gives us the perspective we need to help build not only a sustainable foundation for your physician group, but a successful one. Our client partners enjoy the benefits of:

Our pricing is simple, thoughtful, and fair. We customize solutions to fit your budget.



[www.scale-pg.com](http://www.scale-pg.com)

SCALE prides itself in developing customized solutions for its clients and helping physician groups grow and thrive in a challenging marketplace. Now, we are ready to help you. We look forward to sharing examples of how we have helped our clients and invite you to schedule a 1-on-1 complimentary practice management consultation with us.

**Contact Co-Founder & CEO, Roy Bejarano, at [roy@scale-pg.com](mailto:roy@scale-pg.com)  
or +1 (917) 428-0377 to continue the conversation.**